

# Selected Projects

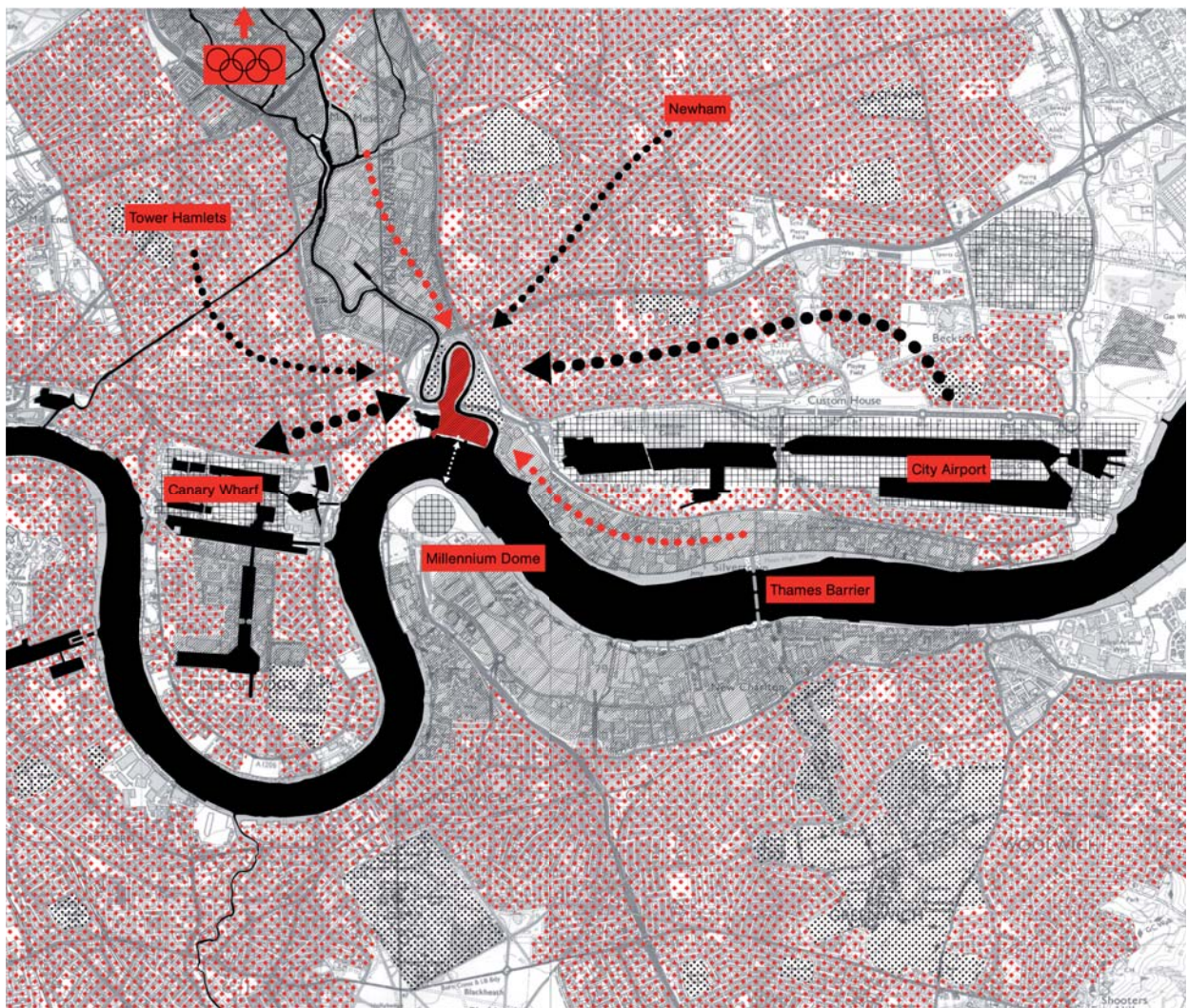
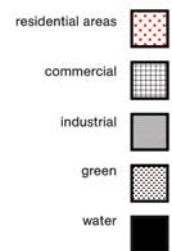


## Leamouth Area, London

The main issue for a successful and sustainable urban design is the quality of public space.

Designing public, semi public and private spaces is our main approach to planning; the aim is to find the specific balance between these items and to shape their interactions.

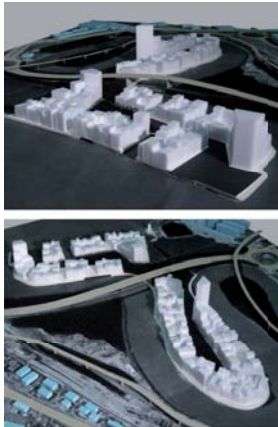
While designing from an urban point of view we use objects and volumes (architecture) to form unique spaces and situations. We use them to fine tune the urban plan and obtain a certain atmosphere (dutch realism); like black and white as free-standing objects they occupy space and define its dimensions or on the other hand in a pattern with others they are the envelope for urban rooms (inside out); outstanding objects can generate, through conflict, an exciting public space (urban utopia); or finally the scale of architecture links the site to its greater context (Leamouth link).



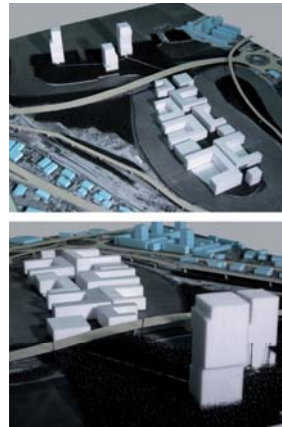




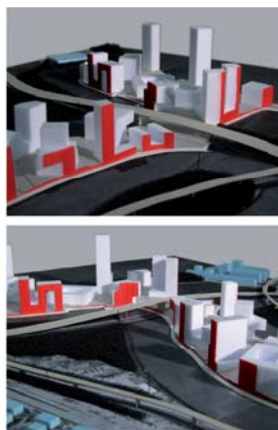
**dutch realism**



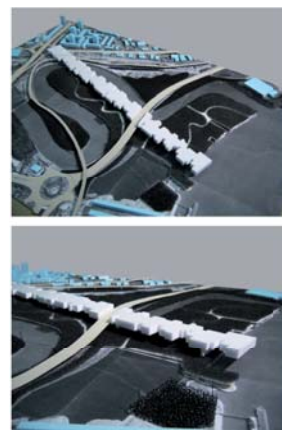
**inside out**



**urban utopia**



**Leamouth link**



Urban design study  
Leamouth Area, London  
Matthias Rottmann, Florian Alles  
De Zwarte Hond

## Diploma [rotterdam]++waalhaven

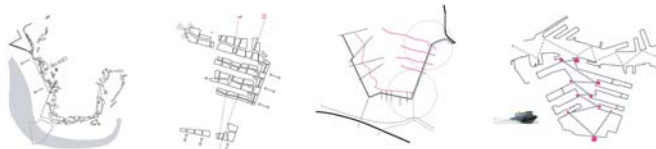
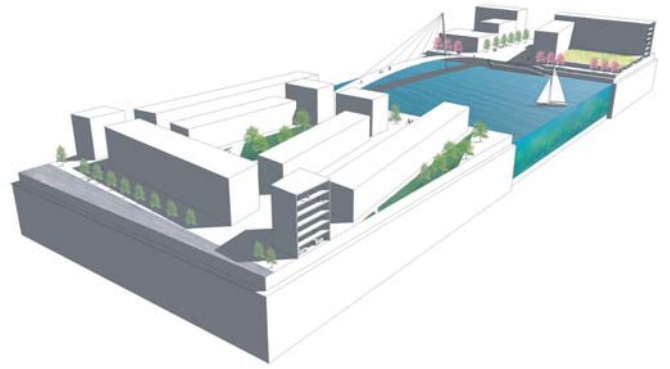
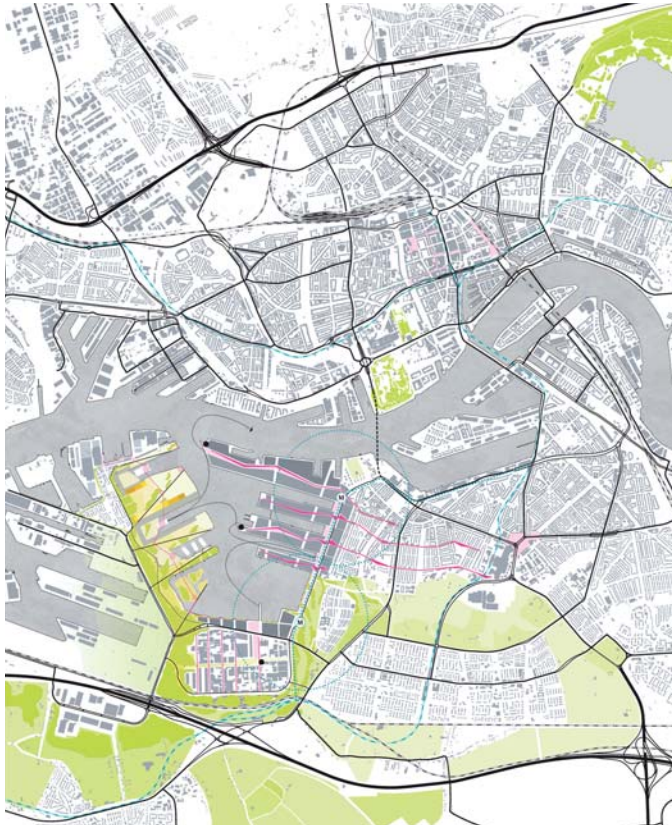
The final work's challenge was the conversion of Rotterdam's Waalhaven area to a new sustainable part of the city.

The draft creates three essential parts: an urban part with strong connections to the surrounding city, a landscape part providing highly recreational value and a commercial and cultural part in the south that forms the connection through a system of public spaces at the waterside.

Location of these parts and the relation to each other mark an important part of the draft.







Collaboration with Jan Adolph,  
Student of Landscape Architecture

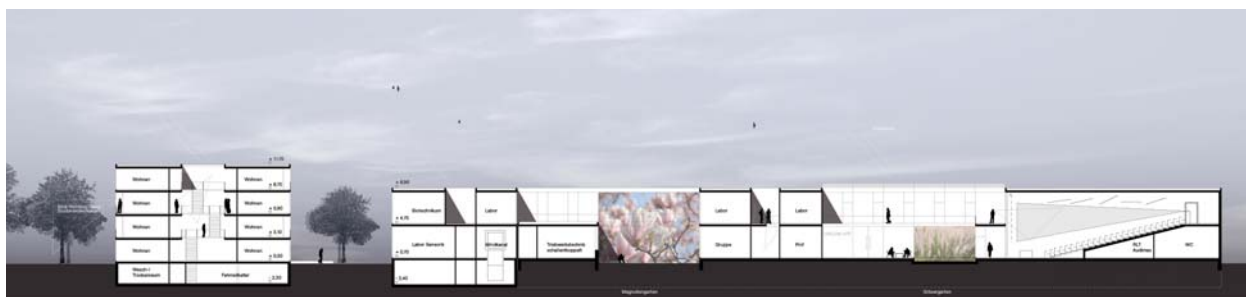
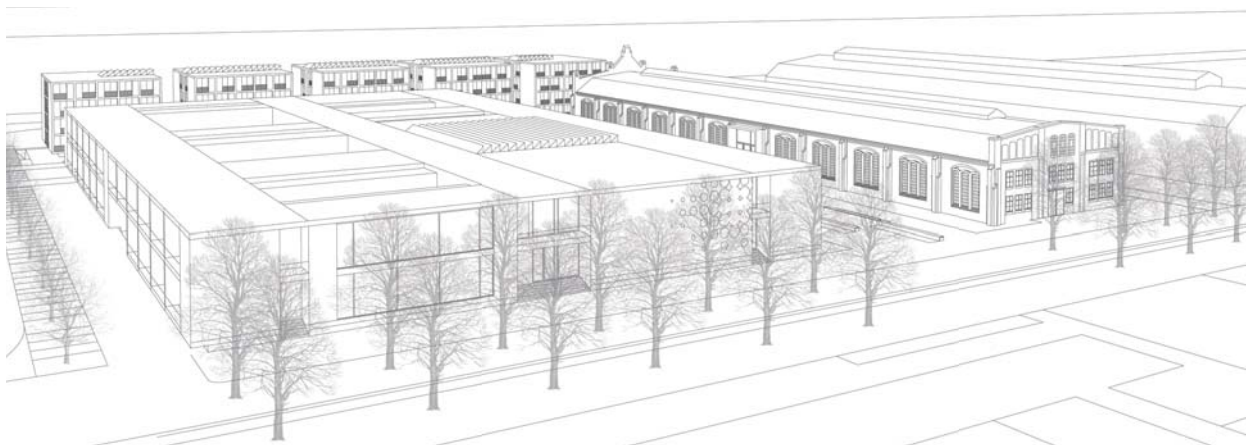
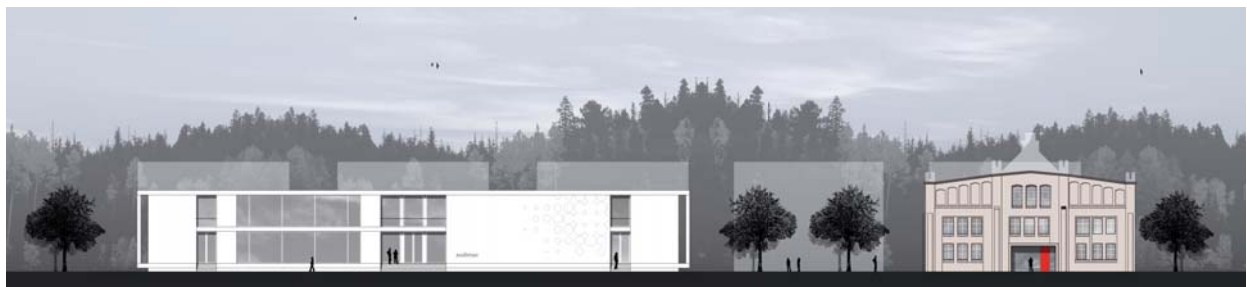
## Competition for TFH Wildau (Berlin)

The task was to design a building for the University TFH Wildau which contains required laboratories, offices and lecture halls as well as a certain amount of dormitories in some additional dwellings.

A special difficulty was to integrate an old existing factory building and to find a suitable solution for the surrounding environment in terms of urban planning and landscape architecture.







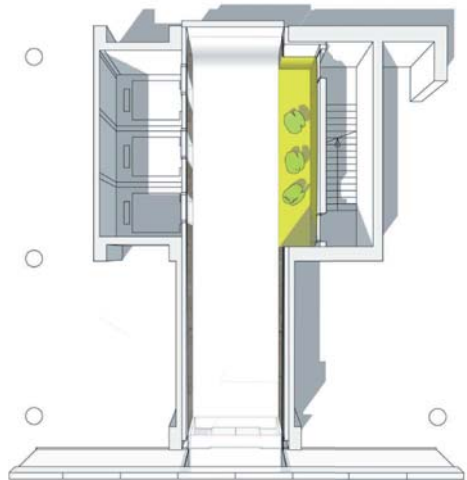
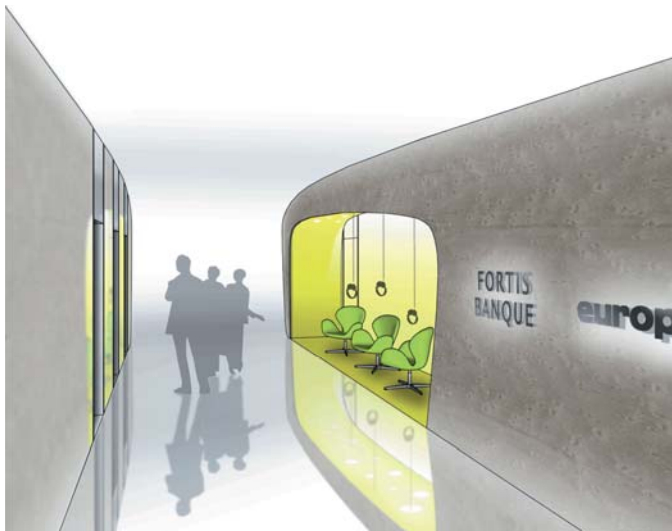
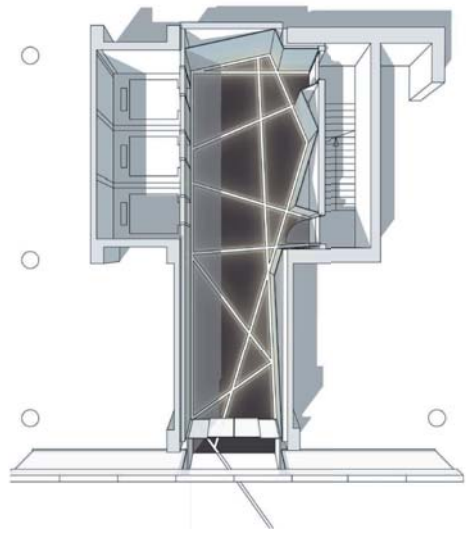
Competition TFH Wildau (Berlin)  
Jens Krausse, Florian Alles,  
Erik Seidel  
Heinle, Wischer und Partner  
Freie Architekten GbR

## Design study for an entrance hall, 'Centre Botanique', Brussels

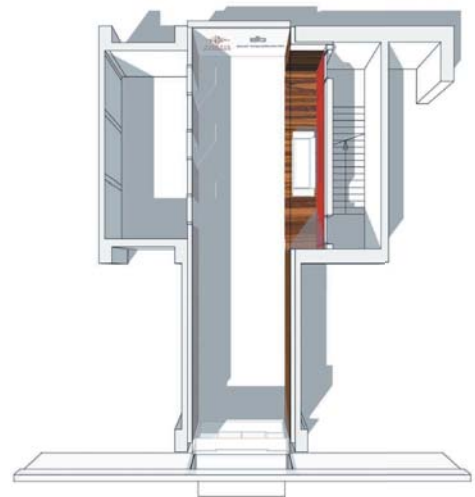
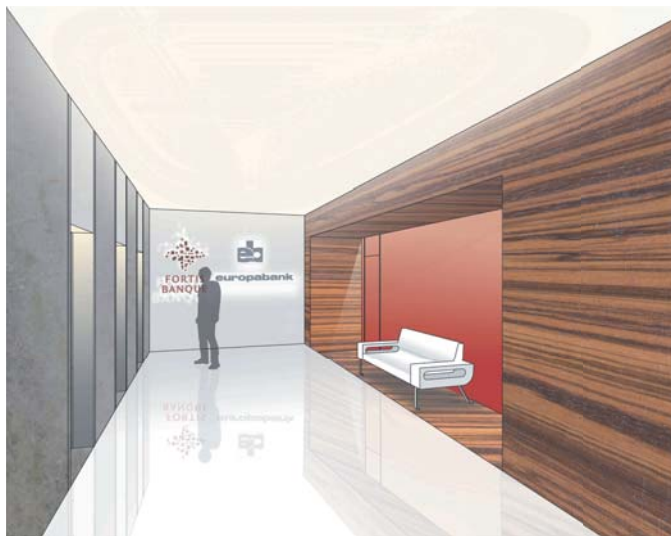
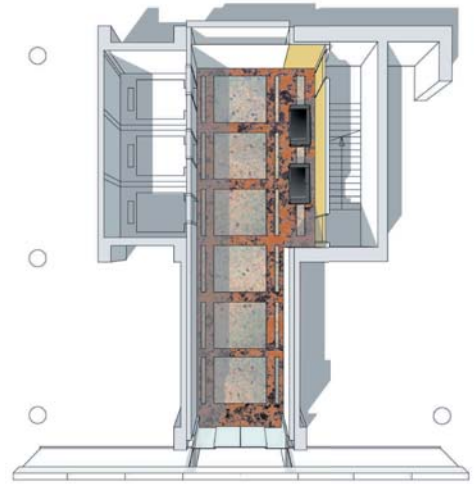
Throughout the renewal of the entire base level of a Financial Center in Brussels, Belgium, the challenge was to find a fundamental design for the entrance hall with all its needs to present a company well.

The study should contain four different Images of how Fortis Bank and Europabank could appear in order to get them a new and interesting state of being represented.

Expressive, lounge, classical and noble.







Design study  
 ‚Financial Center, ‚Centre Botanique‘, Brussels,  
 entrance hall‘  
 Florian Alles, Silke Loose  
 Heinle, Wischer und Partner  
 Freie Architekten GbR

## Draft for a new Reception area/ terrace

Residence of the German Consul, Rio de Janeiro

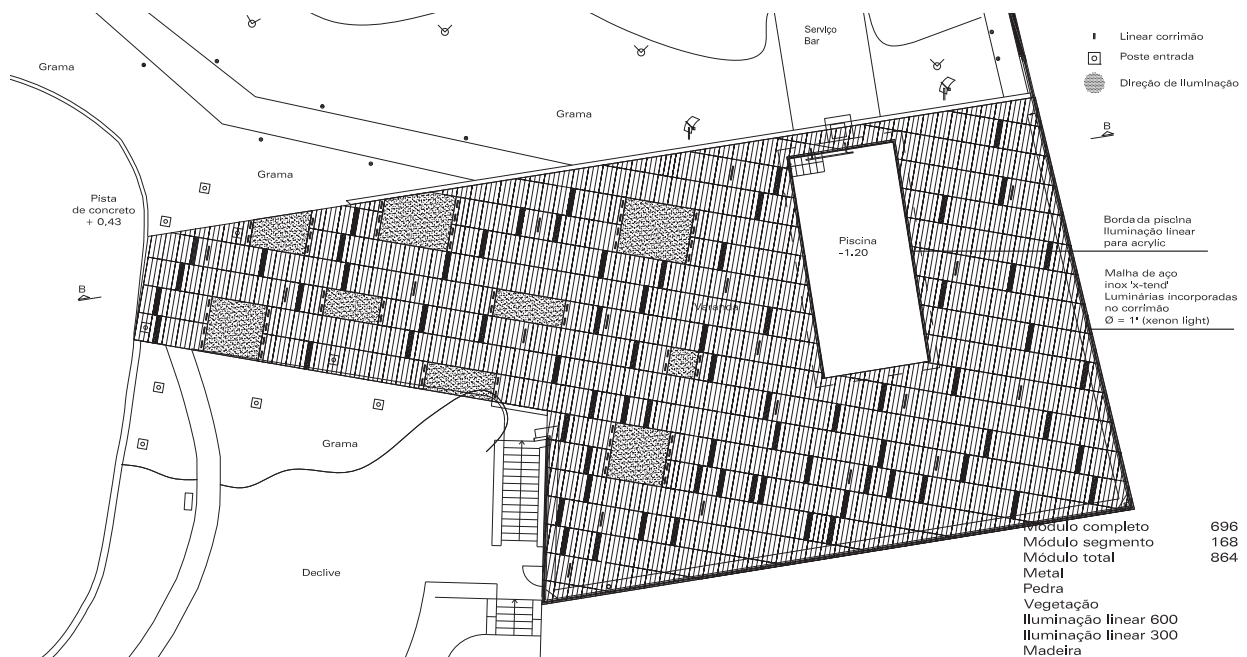
The patio of the residency of the German consul general has to fulfil various purposes. The most essential ones are the open spaces for all sorts of receptions as well as for a leisure- and relaxation area for visitors and the consul.

The concept includes a modular system of flexible components in order to guarantee adaptability to possible changes in use.

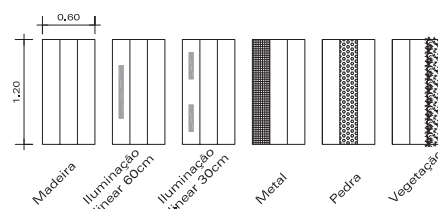
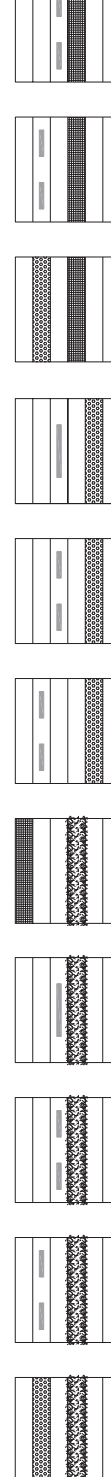
The design keeps to domestic materials and creates a contemporary for important events.

The restriction of the patio is made of a light steel-wire balustrade which allows an open view upon the majestic panorama of Rio.

The surface is made of brazilian hardwood with applications consisting of virging stone, metal, illuminants and planters. The entire patio is elevated in order to provide easy-access electronic installations as well as ideal drainage.







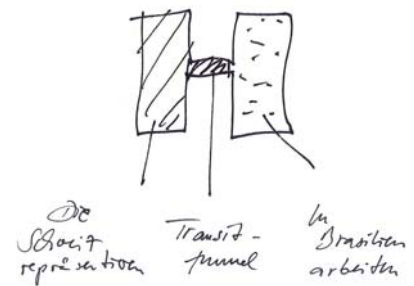
Landscape design  
 Reception area/ terrace of Residence of the German Consul, Rio de Janeiro  
 Meindert Versteeg, Florian Alles  
 Amann Arquitetos

## Redesign of Swiss Consulate, Rio de Janeiro

The main concept is based on a strict separation of the essential areas which are extracted and distinguished according to their arrangement and functionality. The one side acts as ‚functioning‘, the other as ‚representing‘. The creative basics are taken from the common attributes of each culture and are therefore connected. Hereby an intriguing opposition is created which must be displayed in an innovative manner:

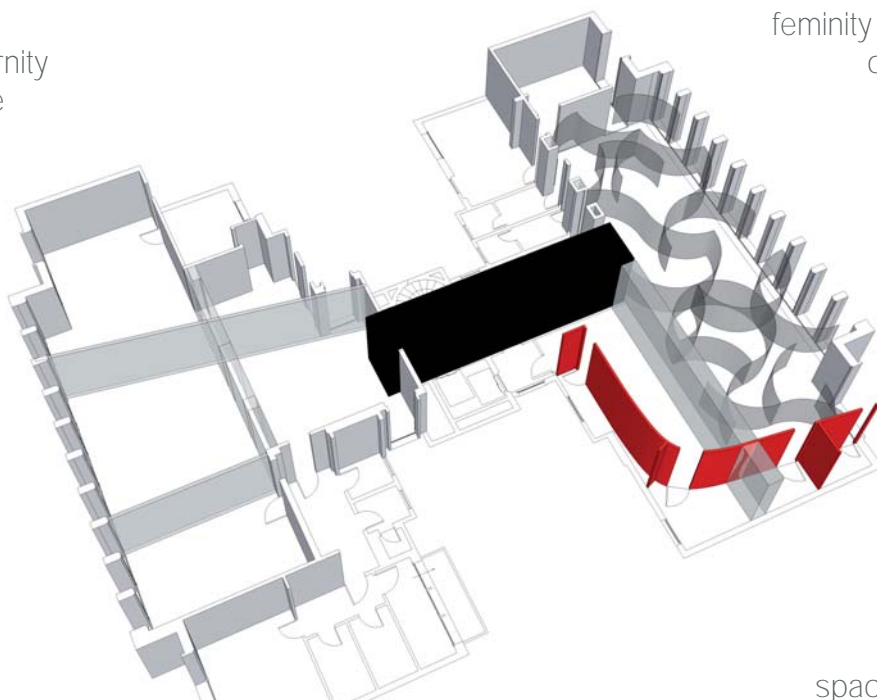
Brazilian functioning – swiss representing.  
free, easy and generous but to the point and practical –  
copious, expressive, „baroque“

Both wings are connected through a corridor situated in between them which functions as a transit space. Its design offers a strong contrast through its bright bluish-white colours and glass surfaces. It functions as a neutral middle section.



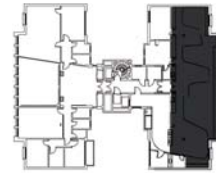
alpine  
freshness  
rationality . clarity  
precision  
national identity  
tradition . modernity  
cultivated nature

mysticism  
tropical metropolis  
plurality  
ocean . horizon  
femininity . blandness  
cheerfulness  
hedonism

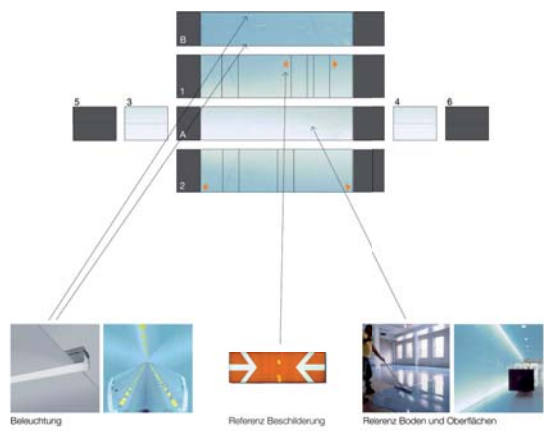


spacial concept

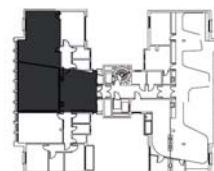




..working



..transit



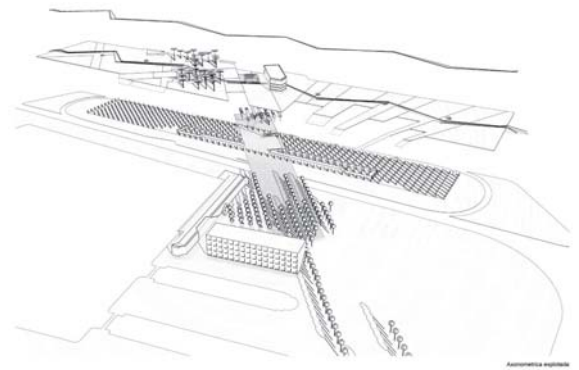
..representation

Interior design project  
Swiss Consulate, Rio de Janeiro  
Florian Alles, Astrid Pudzuhn, Meindert Versteeg  
Amann Arquitectos

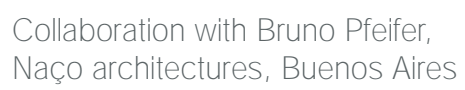
## International Competition of Ideas for the Urban Sector surrounding the North Dock (Dársena Norte), Buenos Aires

The design's challenge was to solve several problems simultaneously: #1 the former port area should provide high quality spaces close to the water, easily accessible from the city. #2 a solution to the heavy traffic connections dividing DN from the city should be found. #3 pedestrian and public transport connections to Retiro Station and the developing quarter of Puerto Madero should be established. #4 a new icon for the city as well as commercial areas and sufficient parking space should be created.

The design proposes a 3-layer-system which solves the traffic problems with underground tubes that connect to the 2nd level car-park with access to the commercial areas and the covering top level. A big public green gives new quality to the city and serves as a zipper between both sides.







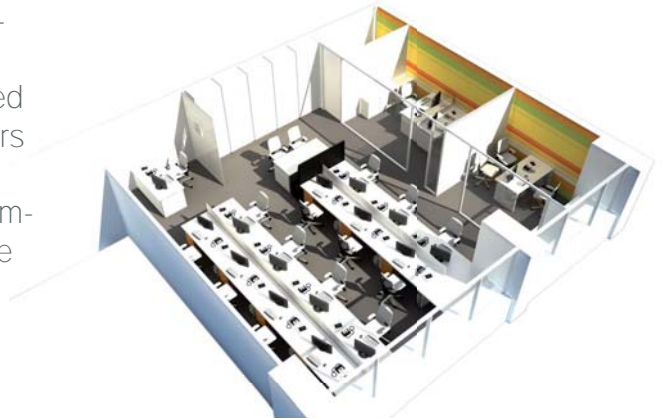
## Redesign and modernisation of the Chamber of Commerce Brasil - Alemanha, Rio de Janeiro

The project's main challenge was to reorganise a small office space of 100 sqm located in one of Rio's business towers the way that 18 employees can work comfortably in a well zoned and modern environment.

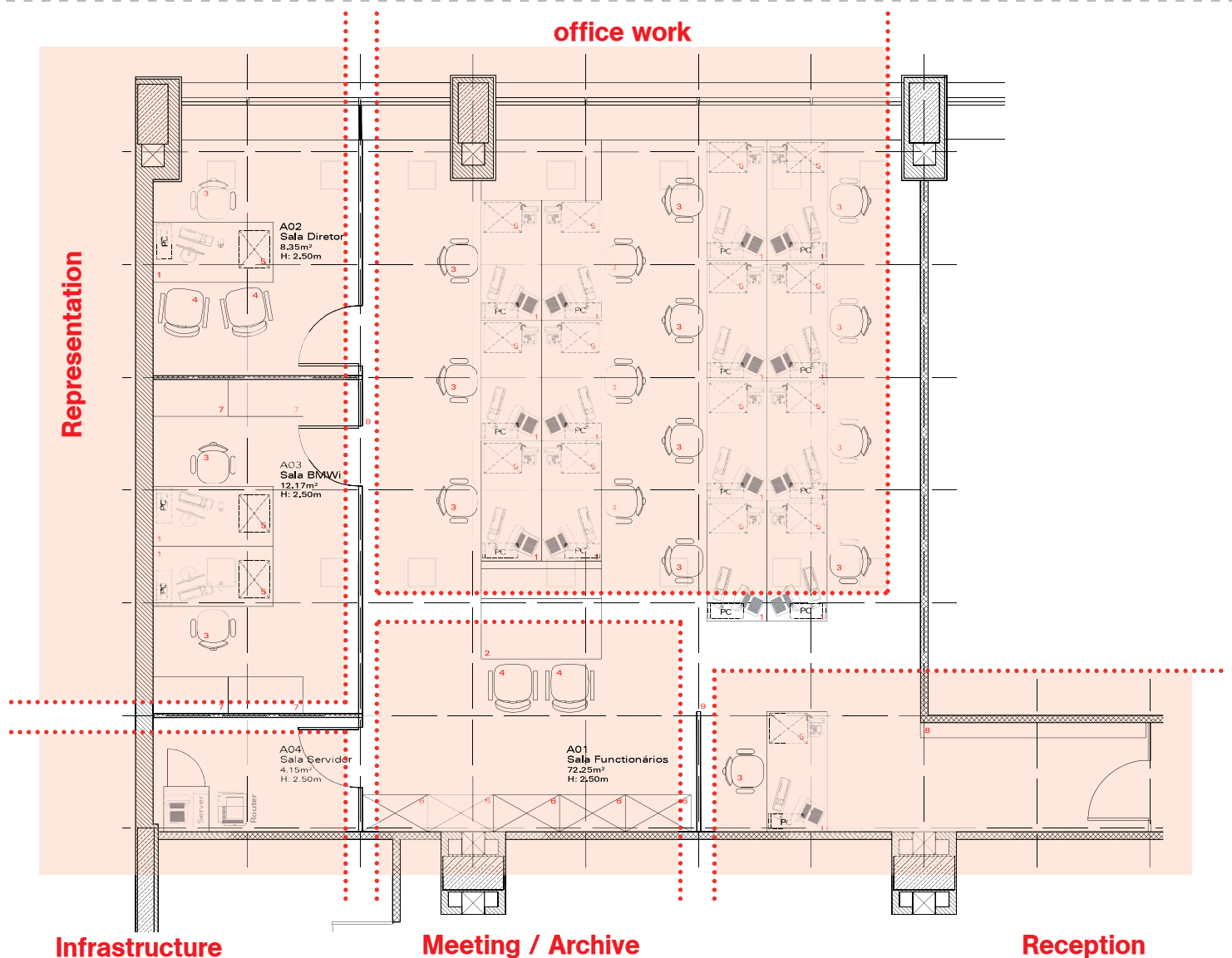
The zoning implied the division of separate work processes like office work, reception, meeting and representation.

The strict regulations of the building's administration led to a simple but clear and strong composition of colours and materials.

The new look of the Brazilian-German Chamber of Commerce is defined by overall tones like anthracite for the floor and white for ceiling, walls and furniture cut by colourful elements like chairs and one framing wall.



ongoing

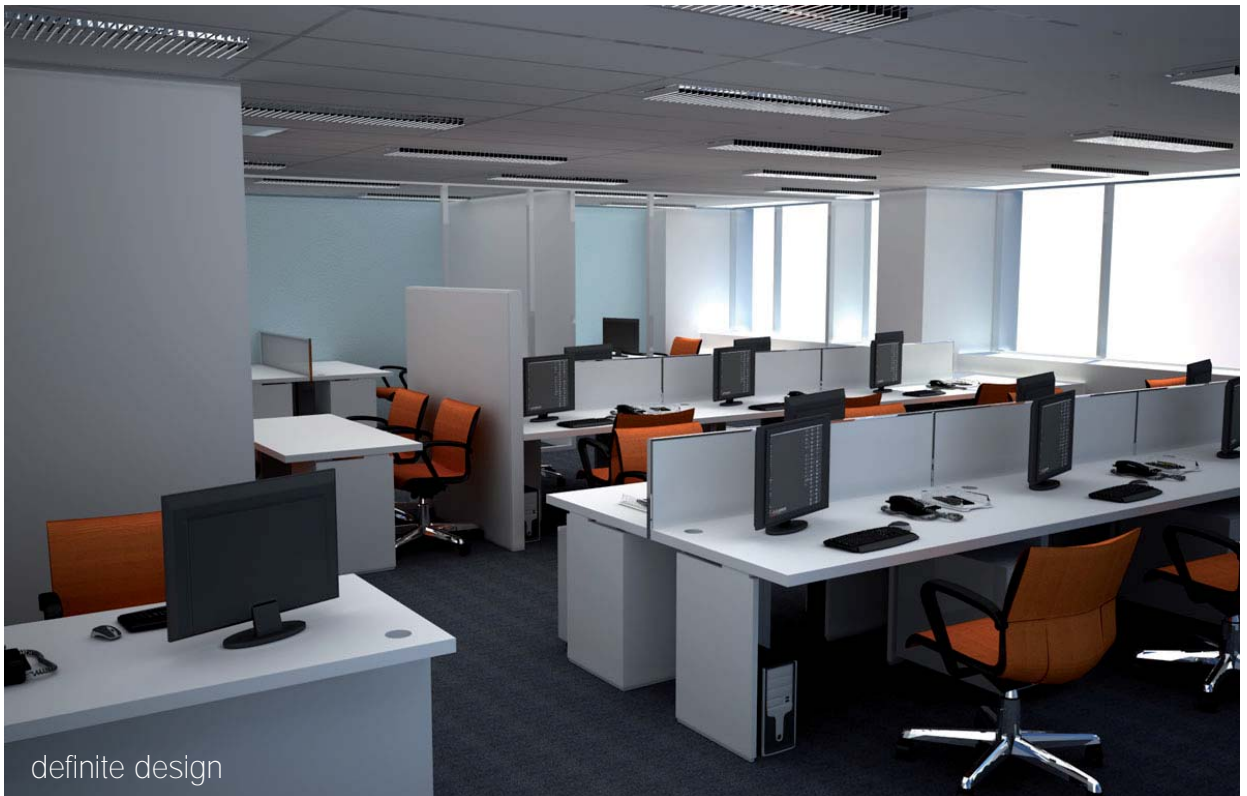


Infrastructure

Meeting / Archive

Reception





---

Collaboration with Bruno Pfeifer,  
Buenos Aires

## Kite surfers home in Cumbuco, Brazil

The project was designed for three young kite surfers from germany who decided to build their own bases in the north of Brazil.

The three most important conditions where:

**Weather** - Cumbuco is located close to the equator at the coastline of the atlantic ocean and has therefore a very warm and windy tropical climate.

A main focus of the design is a constant air flow throughout the whole building that guarantees a comfortable room climate.

**Distribution** - the plot was given by a hotel owner whose condition was to be able to use some of the apartments for his business and family. A tetris-like modul assures the possibility of any imaginable combination of apartments - horizontally and/or vertically.

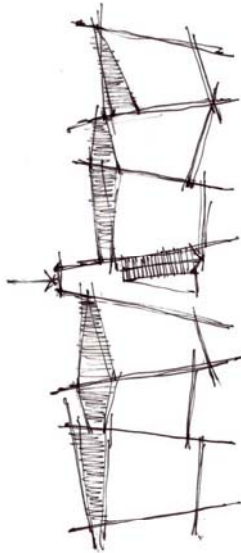
**Form** - lent from a kites shape the buildings modern form is articulated with contemporary textures and surfaces as well as traditional brazilian building materials such as local lumber and cobogo bricks.

---





## KONZEPT . KITE



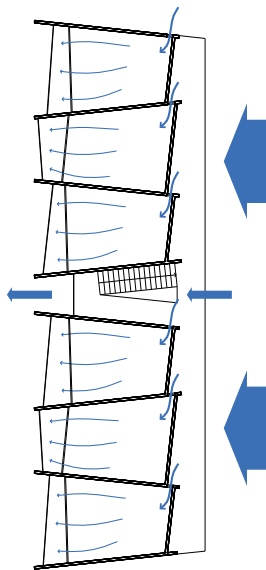
Die freie Gebäudeform ist inspiriert durch die Gestalt eines Kites.

Wie die Drachenform, folgt auch die Gebäudeform überwiegend funktionellen und erst zweitrangig gestalterischen Gesichtspunkten.

Die spitzwinkligen Raumformen sorgen neben den für die natürliche Lüftung notwendigen seitlichen Überständen und den individuell gestaltbaren Außenräumen (Terrassen und Balkone ohne direkte Einsicht des Nachbarn) für spannende und überraschende Innenraumkonstellationen.



## KONZEPT . NATÜRLICHE LUFTZIRKULATION



Dem gleichmäßig starken Luftstrom in Cumbuco ist die Rückseite des Gebäudes zugewandt.

Intern wird eine angenehme, natürliche Luftzirkulation erreicht, indem eine seitliche Öffnung (Cobogó-Wand) für indirekte Zuluft sorgt, ohne dass ein starker Zug entsteht.

Die Entlüftung ist durch Fassadenöffnungen in der Balkonseite gewährleistet.

## KONZEPT . TETRIS

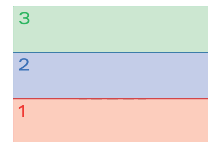
7	8	9	7	8	9
4	5	6	4	5	6
1	2	3	1	2	3

Die Grafik zeigt eine schematische Ansicht der beiden Gebäude mit dem mittig liegenden Treppenhaus. Maximale Auslastung pro Gebäude von 9 Einzelappartements (ca. 24m<sup>2</sup>) mit separatem Eingang.

Mögliche Aufteilungen (jeweils schematisch pro Haus):



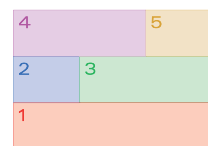
1. drei Einzelappartements im EG drei Doppelappartements über zwei Etagen darüber



2. drei Dreifachappartements horizontal angeordnet, jeweils über eine gesamte Etage



3. drei Dreifachappartements vertikal angeordnet, jeweils über alle Etagen



4. ein Dreifachappartement im EG darüber jeweils ein Einzelappartement und ein Doppelappartement horizontal angeordnet, pro Etage

Alle Varianten sind beliebig miteinander kombinierbar

Collaboration with Bruno Pfeifer,  
Buenos Aires

Buenos Aires, 01.08.2011

**contact@florianalles.de**

---



